

**إدارة التعليم الإلكتروني في التعليم العام
بالمملكة العربية السعودية
(نموذج تنظيمي مقترح)**

-

. . .

-

بِسْمِ اللَّهِ الرَّحْمَنِ الرَّحِيمِ

إدارة التعليم الإلكتروني في التعليم العام
بالمملكة العربية السعودية
(نموذج تنظيمي مقترح)

/

//

//

التوقيع

..... ()

..

..... ()

..

..... ()

..

..... ()

..

..... ()

..

إهداء

إلى والدي ووالدتي الحبيبين ، اللذين تحقق هذا الجهد بتوفيق الله عز وجل ثم
برعائهما ، أسأل الله أن لا يحرمني إياهما ، وأن يرزقهما الجنة ، وأن يرعهما كما
ربياني صغيرا .

إلى من أحببتهم وعشت معهم منذ طفولتي .. إخوتي وأخواتي
إلى زوجتي حفظها الله ...

إلى أبنائي الأغلاء ... محمد وأنس وعروب وراوية وسلطان
إلى أقاربي ...

إلى أصدقائي وزملائي ...

إلى كل من وقف معي وساندني ...

إلى أساتذتي جميعا وأستاذي الفاضل المشرف على الرسالة ...

إلى وطني الحبيب ... وإلى كل غيور عليه ...

إلى كل من يسعى لتطوير التعليم في المملكة العربية السعودية ...

أهدي هذا الجهد ... سائل الله العلي القدير أن ينفع به ، وأن يكون خالصا لوجهه
الكريم .

شكر و تقدير

.

/

.

:

:

•

.

:

•

.

:

•

.

:

•

()

.

.

.

/

/

.

.

.

.

.

/

/

" .

"

—

:

.

.

.

.

.

.

.

.

.

.

.

.

.

.

.

:

/

/

Delphi Method

Delphi Method

()

Freund
(%)

.

:

:

-

.

:

-

(

(

-

-

-

:

(

(

(

(

(

-

/

/

-

.

-

:

-

.

-

.

.

.

.

.

:

()

.

-

.

-

.

-

.

/

/

Study Summary

The urgent need for laying a strategy to develop and reform education has arisen as a result of immense scientific and technological development and the use of information and communication technology in education, scientific research and administration technology proved itself as an indicator of the society's progress and development and a basis for development. Internet and Multimedia – based electronic and upgrading education, reorganizing its institutions and planning to change its overall system to confirm the scientific and technological progress in addition to modern information revolution.

On the other hand this advanced technology needs to be when applied to education, scientifically based planning , organizing and administrating, framed by educational planning administration to thus this study Managing electronic education Arabia – A suggested organizational structure.

This study aimed at preparing a suggested organizational structure at the level of Ministry of education so that it can manage and spread electronic education and laying electronic education strategies, identifying its goals, organizing the implementing it in a way that helps general education schools to best benefit from information and communication technologies through :

1. Identifying the reality of electronic education administration in education in the Kingdom of Saudi Arabia.
2. Knowing the philosophical and organizational bases upon which managing electronic education in general education rely in the Kingdom of Saudi Arabia.
3. Determining the goals that can be achieved by electronic education administration in general education in the Kingdom of Saudi Arabia.
4. Acknowledging planning ways that lead activating electronic education administration in general education in the Kingdom of Saudi Arabia.
5. Determining the suggested structure of electronic education administration in general education in the Kingdom of Saudi Arabia.
6. Identifying the acquired programs for applying electronic education in the light of the philosophy and the goals of the suggested organizational structure of electronic education administration.
7. Identifying how to administrate and follow up the risks of information and communication technology at education schools in the light of the suggested organization structure of electronic education administration in the K.S.A.
8. Identifying the obstacles that face electronic education administration of general education in the K.S.A
9. Identifying the local world and local successful experiments that could be benefited from in administrating and organizing electronic education of in general education in the K.S.A.

Thus, establishing research curriculum and scientific tools for this study requires the opinions of administration, information and communication technology and electronic education experts and specialists. So the researcher has found out that applying Delphi's

trend is the most suitable for such a study. It's about determining a number of experts to work with and consequently form an agreed – upon suggested structure.

The researcher has implemented the descriptive curriculum to analyze researchers contents the studies that are relevant to electronic education and the ideas included in the experts answers to the open questions in the first round of this study to finally enlist the fields and the expression of the suggested visualization, Then setting up the instrument using Delphi's trend by the same experts. Next the tool is finally figured out the distributed among experts, gathering it and vacuuming it off its data. It has been statistically treated as required to get the repetitions of the percentage of the participating experts responses in the last round by applying Freund's equation which is illustrated in the study's procedures provided that the expressions that was 85% and more of the relative importance value of the response of the experts participating in the field study. And the phrases that reached a relative medium weight of 85% of the relative importance value of those experts.

The most important findings of the Study :

The study reached a number of the following main findings :

1. Two phrases only have been achieved describing the reality of electronic education administration in general education in the K.S.A However. That hasn't been achieved in the rest of the phrases which are thirteen phrases.
2. The bases on which the suggested visualization for is founded :
 - a) Philosophical bases.
 - b) Organizational bases.
3. The suggested Visualization aims of electronic education administration in general education have been determined.
4. The planning methods of electronic education administration have been determined.
5. Deducing the suggested organizational structure of electronic education administration in general education in the Kingdom of Saudi Arabia which is embodied in
 - (a) The main activities of the suggested organizational structure.
 - (b) The administrative units related to the main activities of the suggested structure.
 - (c) The nature of units work and its organizational relations in the suggested structure.
 - (d) The supportive units in the suggested organizational structure.
 - (e) Evaluating the suggested organizational structure.
6. Reviewing the required program to apply electronic education in the light of the suggested organizational structure.
7. Laying rules for managing the follow up of information and communication technology risk at schools in the light of the suggested organizational structure.
8. Clarifying the obstacles facing the suggested visualization for electronic education in general education in the K.S.A.

The most prominent recommendations of the study :

1. Benefiting from the suggested visualization of managing and organizing electronic education in general education in the K.S.A.
2. The necessary existence of the political support and laying legislations, policies, finance, organizations, regulations and procedures that support applying electronic education to all general education schools in the K.S.A.
3. Connecting the application of electronic education to Islamic directives represented by our faith, religion, distinctive traditions and beliefs
4. Obligating the supreme administration in the ministry to support the application of electronic education.
5. Forming an experts authority and an electronic education supreme committee in the ministry of education.
6. Establishing an independent administration of electronic education administration at the level of education ministry.

The most prominent suggestions of the study.

1. Completely supporting a national project; economically, politically and by media means to achieve its comprehensive goals.
2. Holding regular meetings for the experts, specialists and whoever interested in electronic education case. These meetings should be sponsored formally by ministry of education discussing up-to-date directives, applications, modern studies and Arab, world and local experiments.
3. Taking formal and immediate procedures by the ministry to guarantee electronic education as an inevitable strategic option to elevate and develop education
4. Inviting private sector local, Arab, and scientific institutions to provide whatever they electronic education offers and its applications they have.

-	:
	. (/)
	. (/)
	. (/)
	. (/)
	. (/)
	. (/)
	. (/)
-	:
	(/)
	(/)
	(/ /)
	(/ /)
	(/ /)
	(/ / /)
	(/ / / /)

	(/ /)
	(/ / /)
	(/ / /)
	/ (/ / /)
	(/ / /)
	(/ / /)
	(/ / /)
	(/ / /)
	(/ / /)
	(/ / /)
	(/ /)
	(/ / /)
	(/ / /)
	(/ / /)
	(/ / /)
	(/ /)
	(/ /)
	(/ / /)
	() (/ / /)
	(/ / / /)
-	:
	(/)
	() (/)
	(/ /)
	(/ / /)

	(/ / /)
	(/ / /)
	(/ / /)
	(/ /)
	(/ / /)
	(/ / /)
	(/ / /)
()	(/ / /)
	(/ / / /)
	(/ / / /)
	(/ / / /)
	(/ / / /)
	(/ / / /)
	- - (/ / / /)
	(/)
	(/ /)
	(/ /)
	(/ /)
	(/ /)
	(/ /)
	(/ /)
	(/ /)
	(/ /)

	(/ /)
	(/)
	(/ /)
	(/ /)
	(/ /)
	(/ /)
	(/)
	(/ /)
	(/ /)
	(/ /)
	(/)
	:
	(/)
	(/)
	(/)
	(/)
	(/)
	:
	(/)
	(/)
	(/ /)
	(/ /)
	(/ /)

	(/)
	(/ /)
	(/ /)
	(/)
	(/ /)
	(/ /)
	(/)
	(/)
	:
	(/)
	(/)
	(/)
	(/)
	(/)
	(/)
	(/)
	(/)
	(/)
	(/)
	(/)
	(/ /)
	(/ /)
	(/ / /)

	(/ /)
	(/ / /)
	(/ / /)
	(/ /)
	(/ /)
	(/ /)
	(/ / /)
	(/ / /)
	(/ / /)
	(/ / /)
	(/ /)
	(/ /)
	(/ /)
	(/ /)
	(/ /)
	:
	(/)
	(/)
	(/)
	(/)
-	

	()	
	()	
	()	

•
•
•
•
•
•
•

: (/)

()

() ()

. ()

.()

.

/ /

()

. ()

On Line

learning
:

Electronic Learning
.()

:

()
)

(-

.

/ /

()

.

.()

.

"()

"

"

"

.(:)

/

/

: (/)

. (هـ)
:

" ()

() " ()

.

.

" "

%

(www.asharqalawsat.com)

.(www.al-jazirah.com)

/ /

.

.()

.

.

.

.

.

)

/

/

(Khan Lewis

)

.(

:

: (/)

:

.

.

.

.

.

.

.

.

: (/)

/ /

⋮

⋅

⋅

⋅

⋅

⋅

⋅

⋅

⋅

⋅

⋅

⋅

⋅

⋅

⋅

⋅

⋅

⋮

(/)

⋅

⋅

⋅

⋅

⋅

⋅

⋅

⋅

/

/

.Delphi Method

: (/)

:

:

-

-

-

.

:

-

.

/

:

-

/

/

(/)

: **E-Learning**

" ()

() .() "

)

.(
()

" :

. (, Dubois and Philip)

:

.

: **E- Learning Management :**

()

.()

:

" "

.

Organization :

()

.()

.

()

.()

:

.

/ /

Organization Structure :

. ()
()

)

.(

:

.

-

/

/

-

: (/)

.

:

.(-) :

.(-) :

.(-) :

.(.) :

) :

.(:

:

.

: (/)

.

()

.()

/ /

.()

()

:

.

•

.

•

.

•

.

•

.

•

.

•

.

•

•

.

•

.()

:

(/ /)

.

()

/

/

.()

:

.

.

.

.

()

-
-
-
-

.()

()

.()

.

/ /

:

(/ /)

:

•

•

.

•

•

.

.

)

.(

"

:

.

.

.

•

•

•

•

.()

)

.

(

/

/

:

-
-
-
-
-
-

()

:

(/ /)

"

"

Electronic Management

.

:

(/ / /)

()

E - Mail

Electronic

Electronic Funds Transfer (EFT)

Data Interchange (EDI)

/

/

.()

: (/ / / /)

()

()

E-management

. ()

internet

.

.()

: (/ / / /)

: ()

/ /

:

.

:

.

:

:

.

.

:

:

.

: **Transition** :

.

.

: **Interaction** :

.

.

: **Transaction**

.

: **Integration**

:

:

/

/

.

.

.()

:

•

.

•

.

•

.

:(- -) (/)

.

/ /

: (/ /)
Organization

.
()

)

() (

.

.()

:

.

-
-

.

-

.

.

-
-

.

/ /

.

.

.

:

•

•

•

(/ /)

.

:

()

•

.

•

.

•

.

•

.

•

•

)

.(

/

/

.

: (/ /)

.

.

. ()
()

()

:

.

-

.

-

/

/

—

[illegible]

(/ /)

/ /

.

:

(/ / /)

"

()

) "

()

(

.(

)

:

(/ / /)

:

()

.

•

•

.

()

•

.

)

•

.(

)

(

()

.(

)

/

/

.

:

(/ / /)

()

.

:

:

•

.

:

•

.

:

•

.

:

•

.

:

•

.

:

(/ / /)

/

/

: ()

•

•

•

•

•

•

•

:

•

•

•

•

•

•

•

•

: (/ /)

: (/ / /)

/ /

11

$$(\quad)$$

•

11

()

• ()

•

•

(/ / /)

• •

()

•

•

•

)

•
•
•
•

.(

•

•

●

•

•

•

/ /

.

:

(/ /)

:

.

•

.

•

.

•

.

•

.

•

.

•

.

•

.

.

.

()

.

•

.

•

.

•

.

•

.

•

/

/

.()
: (/)

()

.()

: (/ /)
()

()

.

" ()

() "

"

."

()

(World Web wide)

/ /

·
(Delivery) ()
()

·
()
)
/ (

·

·
:
() (/ /)

()
(online

learning)

(online learning)

.()

·
:
: (Synchronous E-learning) -

/ /

(Real-time chat) :

.

: (Learning Asynchronous) -

:

.

: (/ /)

) () ()

: () (

•

.

•

•

.

•

.

•

.

•

.

•

.

•

.

•

.

/ /

•

●

●

•

•

•

$$\left(\begin{array}{c} \cdot \\ \cdot \end{array} \right)$$

•

•

•

•

•

•

• •

$$(\quad)$$

•

: CD

•

: Intranet

•

/

/

.....)

: The Internet •

: Video Conferences •
()

Audio Conferences •

Interactive video •

Satellite Programs •

. ()
: (/ /)

: ()

:

-

-

:

-

-

:

-

TCP/IP Networking. :

-

/ /

Data Communications Networking-LAN&WANS

WWW.E-mail, and-FTP Sever Expertise

Operating System Programs Used On Sever (Unix , Lynix, Windows NT)

. (The Technical Support officer) .

. (The Central Administration) .

: **Major Items of Equipments** .

. (Server) .

The Teacher's Workstation .

The Learner's Workstation .

.() The Internet Access .

: (/ /)

" "

.

: ()

. •

. •

. / •

. •

. •

. •

. •

. •

: (/ / /)

. / •

/ /

.

.

.

.

.

.

.

.

:

(/ / /)

.

.

.

.

.

.

.

.

:

/

(/ / /)

.

.

.

.

()

.

.

/

/

[illegible]

.	.	•
.	.	•
.	.	•
.	.	•
.	.	•
.	.	•
.	:	(/ / /)
.	.	•
.	.	•
.	.	•
.	.	•
.	.	•
.	.	•
.	.	•
.	.	•
.	.	•
.	/	•
.(-)	.	•
.	:	(/ /)
.	:	()
.	:	(/ / /)
.	Words Processing	•
.	Database	•
.	Graphics	•
.	Audiovisual Production	•
.	.	•
.	.	•
.	/	/

	Browser	•
()		•
. Hardware platform	(/ / /)	
	. Processors	•
	. Memory	•
	. Hard Drive	•
	. Operating System	•
.		•
	. Disk Drive	•
.	Zip	•
. DVD	CD-Rom	•
: ()	(/ / /)	
.Hardware		•
	. Software	•
Browser types and version		•
. () Plug-ins		•
:	(/ / /)	
:		
:		•
.		•
.		•
/ /		

•

.

•

.

⋮

.

•

.

•

.

•

.

•

.

⋮

.

•

.

•

.

.()

•

.

•

.

•

.

•

⋮

.

•

.

•

.

•

.

⋮

.

•

):

(

.

•

.

•

.

/

/

[illegible]

.()

.

:() (/ / /)

) ()

(ARPANET

)

(MEL NET

(N S F NET)

() .()

(Interconnected Network)

(Functional)

()

(World wide web)

()

(Picture)

(Text)

(Electronic E-mail)

(Internet Relay Chat) ()

)

/ /

(...

. (-)

()

(IBN)

:

.

•

.

•

.

•

.

•

.

•

.

•

.

•

.

•

.

•

.

•

.

()

(//) //

/ /

⋮

•

•

•

•

•

•

.()

(.sa)

:

(/ / / /)

..

"

/

/

11

• ()

•

•

.()

()

•

•

•

•

•

•

•

•

•

•

•

•

•

/ /

[illegible]

.()

()

:

.

.

.

.

.

.

.

.

.

.

.

.

.

.

.

.

.

.()

.

/ /

(- - -)

/ /

: (/)

.

:() (/)

.

/ /

)

. (

(/ /) / /

.

.

:

.

.

.

.

.

)

(WWW.Mcit.gov.sa

.

"

)

"

(WWW.Mcit.gov.sa

/

/



: (/ /)

(/ /) / / / /

:

:

.

:

.

●

.

●

.

●

.

●

:

"

"

)

.(WWW.Mcit.gov.sa

:

(/ / /)

/ /

)

:(

:

(/ / /)

.

:

(/ / /)

:

"

.

(ICDL)

.

(TCDL)

/

/

:

(/ / /)

:

: " "



" "

.

:(LRC)



.

:(Computer Based Labs)



Hands-on Activities

()

.(Sensors)

.

:()



" "

.

/ /

.

:

•

.

)

.(WWW.Mcit.gov.sa

:

(/ /)

.

: (www.informatics.gov.sa/lrc

)

:

(/ / /)

.

.

.

.

/

/

)

. (www.informatics.gov.sa/lrc

.

:

(/ / /)

)

. (www.informatics.gov.sa/lrc

:

(/ / /)

.(www.informatics.gov.sa/lrc)

/ /

/ .

.

()

.(www.informatics.gov.sa/lrc)

: (/ / /)

. ()

. (www.watani.org.sa)

- " " -

/ /

$$: \quad (\quad / \quad / \quad / \quad / \quad)$$

. (www.watani.org.sa)

$$: \quad (\ / \ / \ / \ /)$$

:

• •

●

●

●

●

●

●

●

●

•

●

●

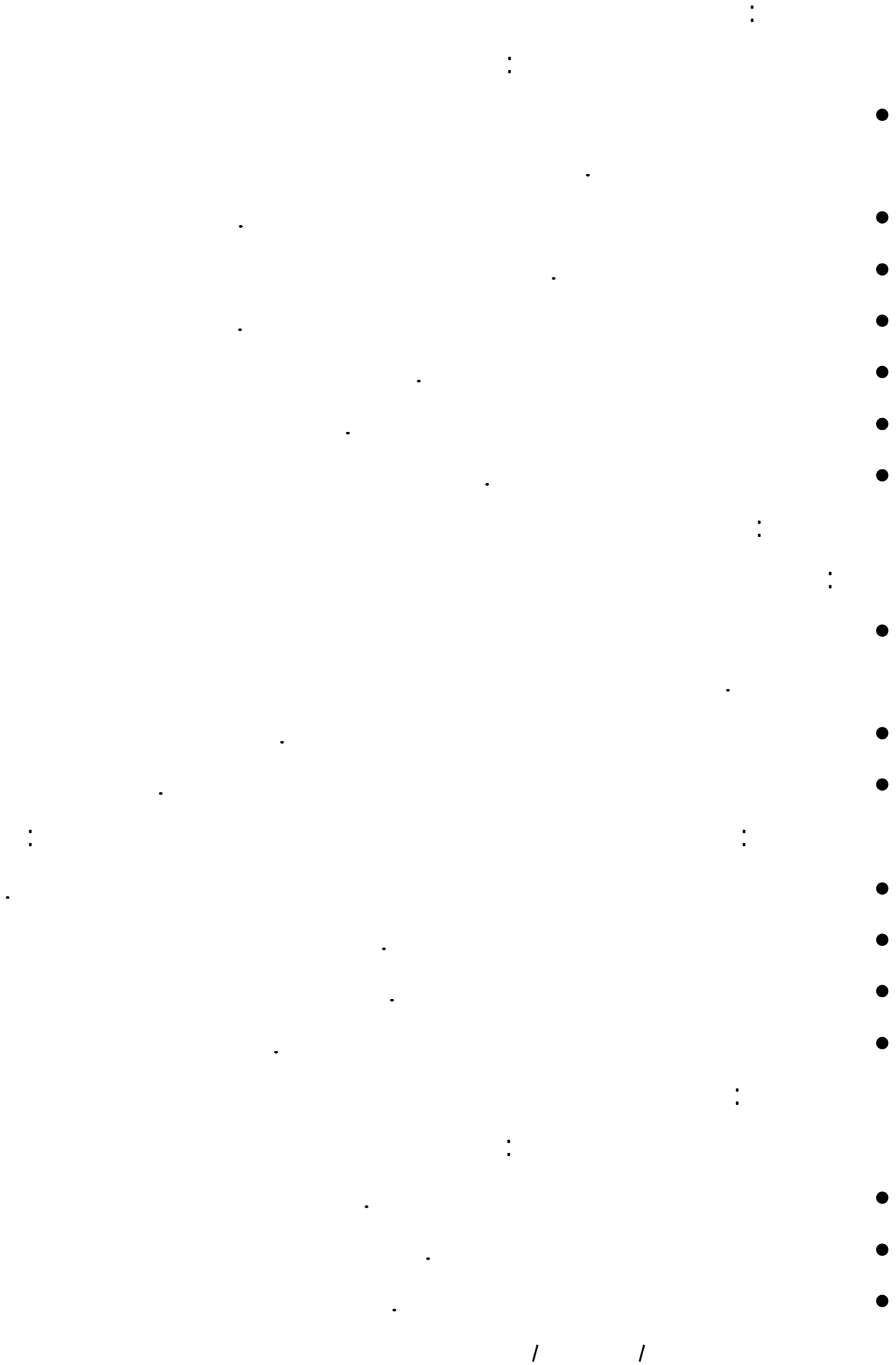
●

●

●

●

/ /



: (/ / / /)

:

.

•

.

•

.

•

.

•

.

•

.

•

.

•

.

•

:

(/ / / /)

:

:

(/ / / / /)

.

..

:

(/ / / / /)

.

/

/

:

(/ / / / /)

.

:

(/ / / / /)

.

:

(/ / / / /)

.

:

(/ / / / /)

.

:

(/ / / / /)

.

:

(/ / / / /)

.

:

(/ / / / /)

.

:

(/ / / / /)

.

:

(/ / / / /)

.

•

.

•

.

•

.

•

.

•

/

/

[illegible]

•
•
•
•
•

(/ / / / /)

:

•
•
•
•

:() (/ / / / /)

:

•
•
•
•
•
•

.(www.watani.org.sa)

(-)

:

:

/ /

•

.

•

.

•

.

•

.

•

.

•

. ()

)

(

()

/ /

•
•

•
:
(/ / /)
•

•
•

:
(/ / /)

•
(ADSL)
(Back Bone)
•

•
•
•

()

(=)

•
•

/ /

•

(ICDL)

.

•

.

()

•

.(-

)

:

(/ /)

.

.

:

•

.

•

.

•

.

•

.

•

.

•

.

•

.

•

.

•

.

•

.

/

/

(/ /)
:

. (www.educatin.gov.qa)

/

.

.

.

:

(/ /)

:

/

ICT

()

/ /

.

.

.(www.educatin.gov.bh)

:

(/)

:

:

(/ /) _

)

%

(

.

()

()

()

()

.

:

/ /

•

.

•

•

•

(/ /)

:

:

(/ / /)

⋮

—

:

•

/

/

/

.

:

•

()

.

:

•

.

:

•

.

:

•

.

:

(/ / /)

()

()

.

,

/

/

:

(/ / /)

:

•

•

:

(/ / /)

. UNPD

•

.VSAID

PFCE

•

•

. Learn

•

•

. Think.com

•

. Intel

•

. SOL (School on Line)

•

.(www.gleavning.emoe.org)

•

(/ /)

:

) ()

. () (

:

•

•

/ /

•

•

•

•

•

$$\cdot$$

$$(\ / \ /)$$

. Educational Network)

/ /

:

(Broad band Network)

Thin Client

Learning Management

System

.(www.Moe.gov.jo/leavning)

:

(/)

:

(/ /)

%

(%)

/ /

.

.

: ()

•

.

•

.

•

.

•

.

•

.

.

:

(/ /)

vision 2020

The Education Act 1996

.

/ /

()

%

%

Smart Schools "

"

.

:

.

.

.

.

.

.

.

.

.

.

.

.

.(

)

•

•

•

•

•

•

•

•

•

•

•

•

•

/

/

:

(/ /)

()

"

"

/

.()

:

(/ /)

.

.

%

.

/

/

. ()

:

•

.

•

.

•

.

:

(/)

:

:

(/ /)

:

(/ / /)

.

.

.

/ /

∴
∴ ()

-
-
-
-
-

∴ ()
∴ ()

-
-
-
-
-

∴ ()

-
-
-
-
-

School CT

∴ ()

-
-
-
-
-

Blackboard

∴ ()

-
-

/ /

•
•
• (www.as.sch.sa)
:

•
•
()
•
•

•
•
•
: (/ / /)

•
(ATM)
()
•

•
) " " (.
" " / /

" "

.

/

:

:

.

•

•

.

•

•

.

.

...

:

:

:

-

.

:

-

.

:

-

.

.

.

/

/

: -

..

.

: -

)

....

(...

.

. (www.kfs.sch.sa)

: (/ / /)

.

.

.

:

.

•

. /

•

"

"

.

()

/ /

•

⋮

•

•

•

•

•

•

•

⋮

(/ / /)

•

•

⋮

⋮

•

⋮

()

•

/ /

()

.

()

.

.

.

•

(web-based)

.

•

.

:

(/ /)

:

(/ / /)

.

:

:

:

•

.

.

•

.

:

:

/

/

.

: **School Arabia**

(/ / /)

:

-
-
-
-
-
-
-

. (www.schoolarabia.net)

:

(/ /)

:

()

(/ / /)

:

/ /

•

—

—

•

—

—

—

•

•

—

•

—

•

—

•

—

.(www.samaatech.org)

• •

$$(\ / \ / \ /)$$

• •

(Tadarus)

●

/

/

.

•

.

(Khabeer)

•

.

(Sein)

•

.

Fosool

•

. www.harf.com

:

(/ / /)

()

.

.

.

/

/

.

.

.(www.dwalej.com)

:

(/ / /)

:

.

-
-
-
-
-
-
-

.

.

.

.

.

.

/ /

.(www.elearning-solutions.net) •

:

(www.Moe.gov.jo/leavning) : **EduWave** (/ / / /)

ITG

Learning

CMS-Content

Management System-LMS

Instructional Management

Management System

Student Information

System-IMS

. System-sis

:

Administrator •

. Author •

. Portal •

:

. •

. •

. •

. •

. •

. •

. •

. •

. www.itgsolutions.com

/ /

: **Menhaj** (/ / / /)

.(www.menhaj.com)

: **School City** (/ / / /)

.
.

()

()

:

-
- Exodus •
- SIF •
- 3 com •
-
- Microsoft •
-
- Sun Micro system •
- Java
- Stanford University •
- ()
- EpGy

:
Community and Content
. sms

Bez Pivot

RDI

. ()
ACS

. ISP

:
(www)

.
My Classroom

.
homepage

/ /

home work help •

.

Tutor on-Line •

.

SMS •

. ...

.

•

.

•

(/)

:

)

(

.

/ /

()

()

✓	✓	✓	✓	✓	✓	✓	✓	()
				✓	✓			
				✓	✓	✓	✓	
✓	✓		✓		✓		✓	
	✓		✓	✓	✓		✓	
			✓	✓	✓	✓	✓	
				✓	✓			
				✓	✓		✓	
✓	✓	✓	✓	✓	✓		✓	
				✓	✓			
				✓	✓			
	✓	✓	✓	✓	✓		✓	
✓	✓	✓	✓	✓	✓	✓	✓	
				✓	✓		✓	
	✓		✓	✓	✓		✓	

✓

()

/ /

()

✓		✓	✓	✓	✓	✓	✓	
	✓	✓	✓	✓	✓	✓	✓	
		✓			✓	✓		
		✓		✓	✓	✓	✓	
		✓			✓	✓		
✓	✓	✓	✓		✓	✓	✓	

()

()

✓	✓	✓	✓	✓	✓	✓	✓	
	✓	✓	✓	✓	✓	✓		
	✓			✓	✓		✓	
✓		✓		✓	✓		✓	
		✓	✓	✓	✓	✓		()
		✓		✓			✓	
		✓	✓	✓		✓		

/ /

-

/

/

-

(/)

:

()

-

()

()

()

.

.

-

.

-

.

-

.

-

.

.

.

●

.

●

.

●

.

●

.

/

/

:

: (/)

: () (/ /)

:

•

•

•

•

•

.

.
: () (/ /)

:

.

/ /

.

:() (/ /)

:

-
-
-
-
-

.

:

.

:() (/ /)

.

/ /

" : ()

(/ /)

.

.

/

/

Virtual "

" Virtual Learning "

"School

:

•

•

•

•

:()

(/ /)

.

.

.

.

.

/

/

(Multimedia)

()

: () (/ /)

:

•

•

•

•

: () (/ /)

:

•

•

•

•

•

/ /

:() (/ /)

:

•

.

•

•

.

•

.

•

:() (/ /)

.

:() (/ /)

.

/ /

:

.

.

:()

(/ /)

:

:

:

()

(/)

: ()

(/ /)

/ /

.

:() (/ /)

E-School

Virtual Learning

On Line Learning

:

.

.

()

Software

.

/ /

$$:(\quad)$$

(/ /)

$$\vdots$$

●

●

●

Video Projector

Video Projector

/ /

(Site)

$$\begin{pmatrix} \cdot \\ \cdot \end{pmatrix}$$

(/ /)

11

11

:

/ /

:() (/ /)

.

:() (/ /)

.

:

•

.

•

.

•

.

•

.

•

.

•

.

/ /

•

•

•

•

⋮

•

•

–

(

)

–

•

•

•

•

•

/

/

•

.

.

•

.

•

.

•

% -

%

% ,

% ,

. % ,

∴ () (/ /)

.

-

)

(

.

/

/

.

(/)

:() Rowley

(/ /)

.

.

.

.

:() Dorothy

(/ /)

.

/ /

:() Werbin (/ /)

.

.

:() Bodin (/ /)

.

:() Cahalan (/ /)

.

/ /

:() Burrello (/ /)

:() Brianl (/ /)

/ /

:()

(/ /)

.
:() . kozma

(/ /)

.
:() Thatcher

(/ /)

.

/ /

:() Robson (/ /)

.

:() Foster (/ /)

.

.

:() lewis (/ /)

.

:

/ /

:

.

.

.

:() **khan** (/ /)

.

:

.

:

(/)

•

/

/

()

()

"

"

()

.

•

) ()
. () khan

() lewis

()
(

.

•

•

.

/

/

()

✓		✓			✓			
		✓		✓		✓	✓	
				✓			✓	
✓			✓	✓		✓		
					✓		✓	
✓			✓	✓	✓	✓		
		✓			✓	✓	✓	
✓				✓				
✓					✓			
		✓	✓	✓		✓	✓	
			✓			✓		
	✓	✓	✓	✓	✓	✓	✓	

.

∴✓

()

		✓	✓			✓		
✓	✓			✓	✓			
		✓				✓		
	✓		✓	✓		✓	✓	
✓					✓		✓	
✓			✓	✓		✓		
		✓				✓	✓	

.

∴✓

/

/

()

		✓		✓		✓		Rowley
✓				✓				Dorothy
				✓		✓		Werbin
	✓				✓		✓	Bodin
					✓	✓	✓	Cahalan
		✓		✓			✓	Burrello
✓			✓			✓		Brianl
		✓		✓				USA
✓			✓				✓	kozma
		✓				✓		Thatcher
✓						✓	✓	Robson
				✓	✓			Foster
		✓		✓		✓		Iewis
✓	✓	✓	✓	✓	✓	✓	✓	khan

.

: ✓

/

/

:

-

() () () ()
Robson) (Cahalan) () ()
.(khan) (

-

() ()
() () () ()
(Thatcher) (Rowley) ()
.(khan) (lewis)

-

() () ()
(Bodin) () () ()
.(Foster)

-

() ()
(Dorothy) () ()
.(lewis) (USA) (Werbin

-

() ()
() () () ()
(khan) (kozma) (Brianl

-

() () () ()
(Burrello) () ()
(lewis)
() ()
(khan) ()

-

-

()
Brianl) () () ()
(Robson) (kozma) (

:

•

.

/ /

Delphi

Method

/

/

-

/

/

-

(/)

.

.

:

(/)

:

:

(/ /)

.

:

(/ /)

(

)

/

/

: **Delphi Method**

(/ /)

E-mail

. ()

Delphi Method

Delphi Method

. ()

Delphi Method ()

Cornerstone of Futures Research

Delphi Method

"

Iterative

" Experts

Convergence of

Survey

.() Opinions

()

.()
: Delphi Method ()

•

•

•

•

•

•

•

Feedback

•

•

•

Delphi Method

•

Delphi Method ()

:

•

•

•

•

•

•

/ /

: (/)

Delphi Method

:

. -
-

E-Mail

.

.

()

.

: (/ /)

:

- .
- .
- . (-)

/ /

() ()

Delphi Method

() ()
.() ()
()

: (/ /)
() ()
%
()

. /
: ()
(% ,) (% ,)
.
(% ,)
(% ,) (% ,)
/ /

(% ,)

(% ,)

()

%			%			%		
			,			,		
			,			,		
%								
,			%			%		
,			,			,		-
,			,			,		
,			,			,		

() *

(% ,)

(% ,)

(% ,)

(% ,)

(% ,)

(% ,) (% ,)

/ /

·
:
(/)

:

: •

·
·
)
:
:
·

· (: •

· : •

: (/ /)

:

: (/ / /)

·
:
(/ / /)

/ /

()

.()

·
:

()

()

:

()

/ /

()

.

: (/)

Delphi

Method

:

•

. ()

()

•

()

.

(%)

()

•

.

•

.

•

. ()

()

•

()

(% ,)

.

()

•

/ /

. ()

•

:

-

=

=

=

=

)

. (=

-

=

=

=

=

)

. (=

-

=

=

=

=

)

. (=

()

•

. ()

(% ,)

%

•

.

•

.

(%)

•

.

.

•

/

/

-

/

/

-

: (/)

:

.

:

:

:

:

.

:

.

:

:

:

:

:

:

/

/

:

(/)

:

(- / -)

:

"

"

:

.

•

.

•

.()

•

(Delphi Method)

()

:

%

%

.

/

/

()

			()		()		()		()		()			
	%		%		%		%		%		%			
	/		/		/		/		-				.	
	/		/		/		/		-				.	
	/		/		/		/		-				.	
	/		-	-	-	-	/		/		/			
	/		/		/		/		-	-	-	-		
	/		/		/		/		/		/			
	/		/		/		/		/		/			
	/		/		/		/		/		/		.	
	/		/		/		/						.	
	/		/		/		/		/		/			
	/		/		/		/		-	-	-	-		
			/		/		/		/		/			
	/		/		/		/		/		/			
	/		/		/		/		/		/		.	
	/		-	-	-	-	/		/		/		.	

.() ()
()

:(%)

() •

.(,)

() •

.(,)

/ /

:

○

.

○

.

:

(%)

()

●

()

()

●

(,)

()

●

.(,)

()

●

.(,)

()

●

.(,)

()

●

.(% ,)

()

●

.(,)

()

●

.(,)

()

●

.(,)

/

/

() •

.(,)

() •

.(,)

() •

.(,)

() •

.(,)

%

:

✕

.

✕

.

✕

.

✕

.

✕

.

✕

.

✕

.

✕

.

✕

.

✕

.

✕

.

✕

.

✕

.()

/ /

.
(/)

:

:

()

%

: ()

() •

.(,)

() •

()

() •

(,)

() •

.(,)

/ /

()

.

			()		()		()		()		()			
	%		%		%		%		%		%			
									,		,		.	
	,								,		,		.	
	,								,		,			
	,								,		,		.	
	,								,		,			
	,								,		,		.	
	,								,		,			
	,								,		,		.	
	,								,		,			

.

() •

(,)

() •

(,)

() •

.(,)

() •

.(,)

() •

.(,)

.

/ /

()

: () %

() •

.(,)

() •

.(,)

() •

.(,)

() •

.(,)

() •

.(,)

() •

.(,)

.

()

.

			()		()		()		()		()			
	%		%		%		%		%		%			
	,								,		,			.
	,								,		,			.
	,								,		,			.
	,								,		,			.
	,								,		,			.
	,								,		,			.
	,								,		,			.
	,								,		,			.
	,								,		,			.
	,		,		,				,		,			.
	,				,				,		,			.
	,				,				,		,			.
	,				,				,		,			.
	,								,					.
	,								,					.
	,								,					.
	,								,					.

() •

.(,)

() •

.(,)

.

() •

.(,)

/ /

() •

.(,)

() •

.(,)

() •

.(,)

() •

.(,)

() •

.(,)

() •

.(,)

.

: %

() •

.(,)

() •

.(,)

/ /

:

(/)

:

()

.

()

.

			()		()		()		()		()			
	%		%		%		%		%		%			
	/								/		/			
	/								/		/			
	/								/					
	/								/		/			
	/						/		/		/			
	/						/		/		/			
	/								/		/			
	/						/		/		/			
	/								/		/			
	/						/		/		/			
	/								/		/			
	/		/		/		/		/		/			
	/						/		/		/			
	/		/		/		/		/		/			

/

/

()

.

			()		()		()		()		()			
	%		%		%		%		%		%			
									'		'		.	
	'								'		'		.	
	'						'		'		'		.	
	'								'		'			
	'								'		'			
	'						'		'		'		.	
	'								'				.	
	'								'		'		.	
	'								'		'		.	
	'								'		'		.	
	'						'		'		'		.	

()

: () %

() •

.(,)

() •

.(,)

/ /

() •

.(,)

() •

.(,)

() •

.()

() •

.(,)

() •

.

.(,)

() •

.(,)

() •

.(,)

() •

.(,)

() •

.(,)

() •

.(,)

() •

.(,)

() •

.(,)

() •

.(,)

/ /

() •

$$\cdot \left(\begin{array}{c} \\ \end{array} \right)$$

() •

 $\cdot \left(\begin{array}{c} \\ , \end{array} \right)$ $(\quad) \bullet$
$$\cdot \left(\begin{array}{c} \cdot \\ \cdot \end{array} \right)$$

() •

$$\cdot \left(\begin{array}{c} \\ , \\ \end{array} \right)$$

() •

$$\cdot \left(\begin{array}{c} \\ \end{array} \right)$$

() •

$$\cdot \left(\begin{array}{c} \\ \end{array} \right)$$

() •

 $\cdot \left(\begin{array}{c} \\ , \\ \end{array} \right)$ $(\quad) \bullet$
$$\cdot \left(\begin{array}{c} \cdot \\ \cdot \end{array} \right)$$

() •

$$\cdot \left(\begin{array}{c} \\ \end{array} \right)$$

() •

$$\cdot \left(\begin{array}{c} \\ \end{array} \right)$$

() •

$$\cdot \left(\begin{array}{c} \\ \end{array} \right)$$

•

/ /

: %

() •

.(,)

:

(/)

:

()

.

()

.

			()		()		()		()		()				
	%		%		%		%		%		%				
	/								/		/				
	/								/		/				
	/								/		/				
	/								/		/				
	/								/		/				
	/		/		/		/		/		/				
	/								/		/				
	/		/		/		/		/		/				
	/				/		/		/		/				
	/				/		/		/		/				
	/				/		/		/		/				
	/				/		/		/		/				
	/				/		/		/		/				
	/		/		/		/		/		/				
	/		/		/		/		/		/				
	/				/		/		/		/				
	/				/		/		/		/				
	/		/		/		/		/		/				
	/				/		/		/		/				
	/				/		/		/		/				
	/		/		/		/		/		/				
	/				/		/		/		/				

/ /

()

() %

:

()

•

.()

()

•

.(,)

()

•

()

()

•

.(,)

()

•

(,)

()

•

.(,)

()

•

(,)

()

•

.(,)

()

•

(,)

.

()

•

(,)

/

/

() •

.(,) .

() •

.(,)

() •

.(,)

() •

,

.(,)

() •

.(,)

() •

.(,)

() •

.(,)

() •

.(,)

() •

.(,)

.

:

/ /

() •
.(,)
() •
.(,)
(/)

:

:

()
()
.
()
()

			()		()		()		()		()			
	%		%		%		%		%		%			
	,		,		,		,		,		,			
			-	-	-		-	-	,		,			
	,		,		,		,		,		,			
	,		-	-	-	-	-	-	,		,			
			-	-	-	-	-	-	,		,			
			-	-	-	-	-	-	,		,			
	,		,		,		,		,		,			
	,		,		,		,		,		,			
	,		,		,		,		,		,			
	,				,				,		,			
	,		,		,		,		,		,			
	,		,		,		,		,		,			
	,		,		,		,		,		,			

/ /

()

()

()

:

()

%

()

•

.()

()

•

.()

()

•

.()

()

•

.(,)

()

•

.(,)

()

•

.(,)

()

•

.(,)

()

•

.(,)

()

•

.(,)

/

/

.

%

:

()

•

.(,)

.(% ,)

()

•

()

•

.(,)

()

•

.(,)

()

.

()

()

			()		()		()		()		()			
	%		%		%		%		%		%			
									,		,			
	,				,				,		,		.	
	,								,		,			
	,				,		,		,		,			
	,		,		,		,		,		,		.	
	,		,		,				,		,			
	,				,				,		,			

/ /

()

()

: () %

() •

.()

() •

.(,)

() •

.(,)

() •

.(,)

() •

.

.()

() •

.

.(,)

.

: %

() •

.(,)

/ /

()

.()

			()		()		()		()		()		
	%		%		%		%		%		%		
	,				,		,		,		,		
	,				,		,		,		,		
	,				,		,		,		,		
	,								,		,		

()

.
()
()

)

() %

:

() •

.(,)

() •

.(,)

/ /

() •

.(,)

() •

.(,)

()

.

()

.

()

.

			()		()		()		()		()			
	%		%		%		%		%		%			
	,		,		,		,		,		,			
	,		,		,		,		,		,		.	
	,		,		,		,		,		,			
	,		,		,		,		,		,			
			,		,		,		,		,			
	,		,		,		,		,		,			

/ /

()

() %

:

- () •
- .(,)
- () •
- .(,)
- () •
- .(,)
- () •
- .(,)
- () •
- .(,)

.

: %

.() () •

/ /

()

()

			()		()		()		()		()			
	%		%		%		%		%		%			
	,				,		,		,		,			
	,				,		,		,		,			
			,		,		,		,		,		.	
	,		,		,		,		,		,			
	,		,		,		,		,		,			
	,		,		,		,		,		,			
	,						,		,		,			

()

() %

:

()

•

.(,)

()

•

.(,)

()

•

.(,)

()

•

.(,)

/ /

() •

.(,)

.

%

:

() •

.()

(% ,)

() •

(/)

:

:

()

.

()

: () %

() •

.(,)

() •

(,)

/ /

()

.

			()		()		()		()		()			
	%		%		%		%		%		%			
	,		,		,		,		,		,			
	,				,		,		,		,			
	,				,		,		,		,			
	,		,		,		,		,		,			
	,		,		,		,		,		,			
	,		,		,		,		,		,			
	,		,		,		,		,		,			
	,		,		,		,		,		,			
	,		,		,		,		,		,			
	,		,		,		,		,		,			

() ●

.(,)

() ●

.(,)

() ●

.(,)

/ /

() •

.(,)

() •

.(,)

() •

.(,)

() •

.(,)

() •

.(,)

.

: %

() •

.(,)

(/)

:

:

/ /

()

.

()

.

			()		()		()		()		()			
	%		%		%		%		%		%			
	,				,				,		,			
	,		,		,				,		,			
	,		,		,				,		,			
	,		,		,		,		,					
	,				,		,		,					
	,						,		,		,			
	,								,		,			
	,				,				,		,			
	,				,		,		,		,			

()

() %

:

/ /

() •

.(,)

() •

.(,)

() •

.(,)

() •

.(,)

() •

.(,)

() •

.(,)

() •

.

.(,)

() •

.(,)

.

: %

() •

.(,)

() •

.(,)

/ /

:

(/)

:

()

.

()

			()		()		()		()		()			
	%		%		%		%		%		%			
	,		,		,				,		,			
	,		,		,		,		,		,			
	,				,		,		,		,			
	,				,		,		,		,		.	
	,				,		,		,				.	
	,				,		,		,		,			
	,		,		,		,		,		,			
	,				,		,		,		,			
	,				,		,		,		,			
	,				,		,		,		,		.	
	,		,		,		,		,		,		.	
	,				,		,		,		,			

/

/

()

: () %

() •

.(,)

.

() •

.(,)

() •

.(,)

() •

.(,)

() •

.(,)

() •

.(,)

.

() •

.(,)

() •

.(,)

() •

.(,)

.

/ /

: %

() •

.(,)

() •

.(,)

() •

.(,)

:

(/)

(/ /)

Forecasting Techniques

Delphi Method

.

()

:

.

-

.

-

.

-

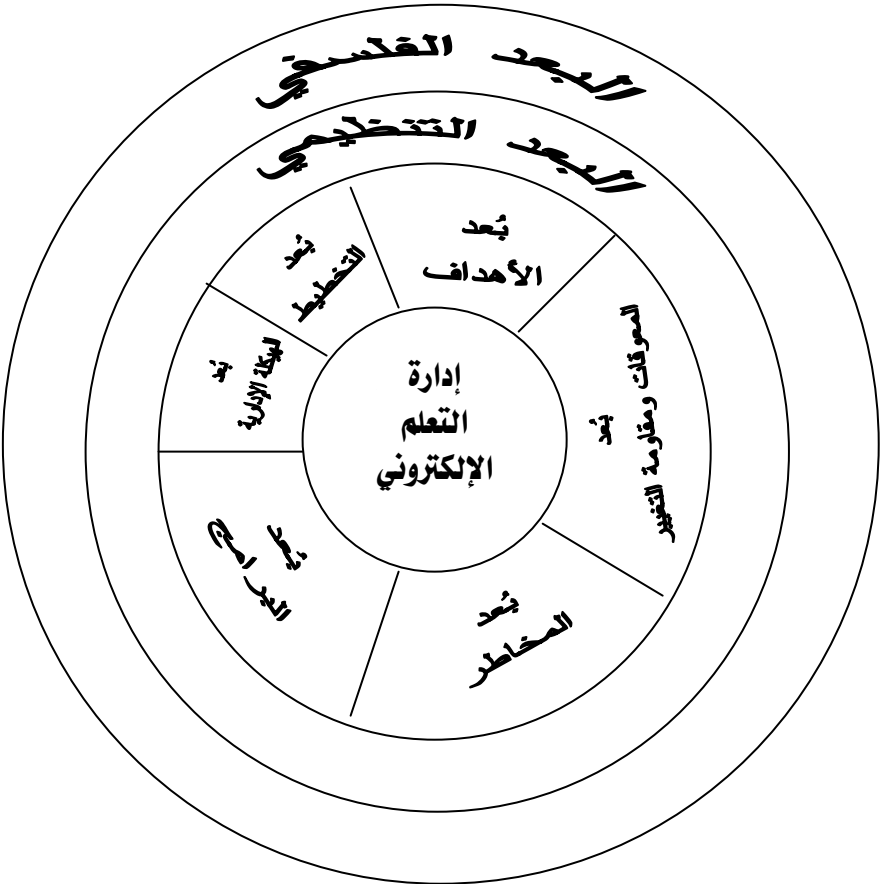
.

-

/

/

()



()

%

:

()

% ,		%							
		%		% ,		% ,		%	
% ,		% ,		% ,		% ,		% ,	
% ,				% ,		% ,		% ,	
				%		% ,		% ,	
		% ,		% ,		% ,		% ,	
% ,		% ,		% ,		% ,		% ,	
% ,		% ,		% ,		% ,		% ,	
% ,				% ,		% ,		% ,	
						% ,		% ,	
% ,		%				% ,			
% ,		% ,		% ,		% ,		%	
% ,		% ,		% ,		% ,		% ,	
% ,		% ,		%				% ,	
% ,		% ,		% ,		% ,		% ,	
% ,				% ,		% ,		% ,	
		% ,		% ,		%		% ,	
% ,				% ,		% ,		% ,	
% ,		% ,		% ,		% ,		% ,	
% ,		% ,		% ,		% ,		% ,	
% ,		% ,		% ,		% ,			
		% ,		% ,		% ,		% ,	
% ,						% ,		% ,	
% ,		% ,				% ,		% ,	
% ,		% ,		% ,		% ,			
		% ,		%		% ,		% ,	
% ,		% ,				% ,		% ,	
% ,				% ,		% ,		% ,	
% ,									
% ,									
% ,									
% ,									

:

(/ /)

:

(/ / /)

:

:

.

-

.

-

.

-

.

-

.

-

.()

-

:

:

.

●

.

●

.

●

.

●

.

●

.

●

.

●

.

●

/

/

.

•

:

(/ / /)

.()

.

:

:

.

•

.

•

.

•

.

•

.

•

.

•

.

•

.

•

.

•

.

•

.

•

/

/

• •

●

●

●

●

●

●

●

●

●

●

●

●

●

●

●

●

●

●

/

/

(/ /)

:

()

.()

:

:

(/ / /)

:

.

.

.

.

.

.

.

.

.

•

•

•

•

•

•

•

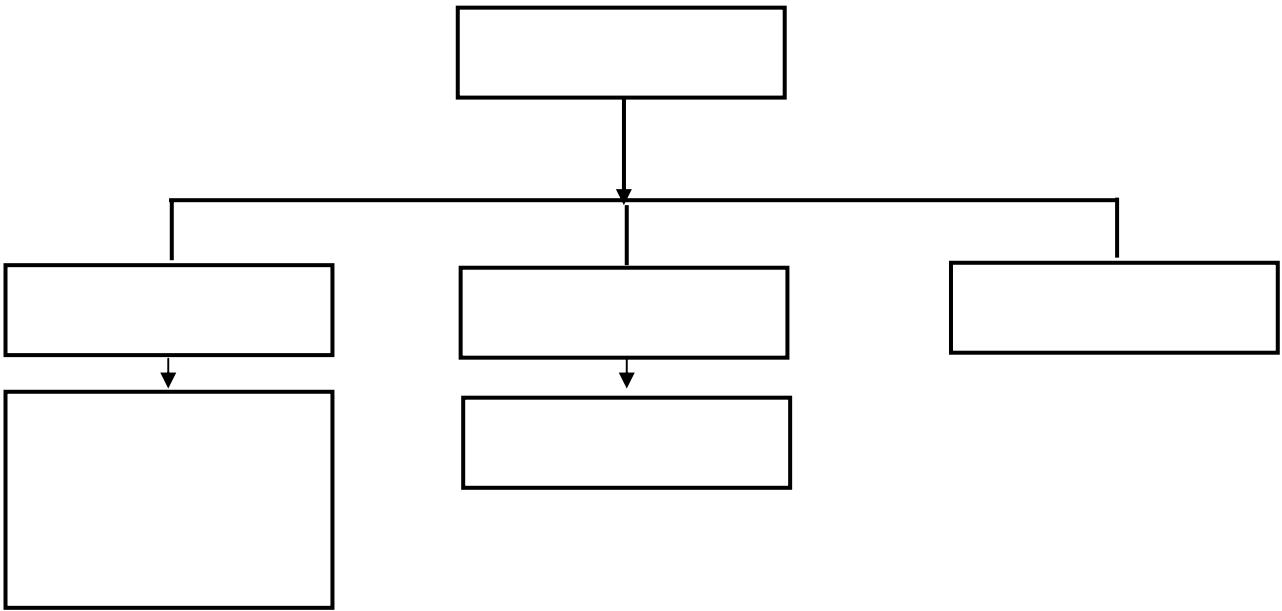
•

•

/

/

()



:

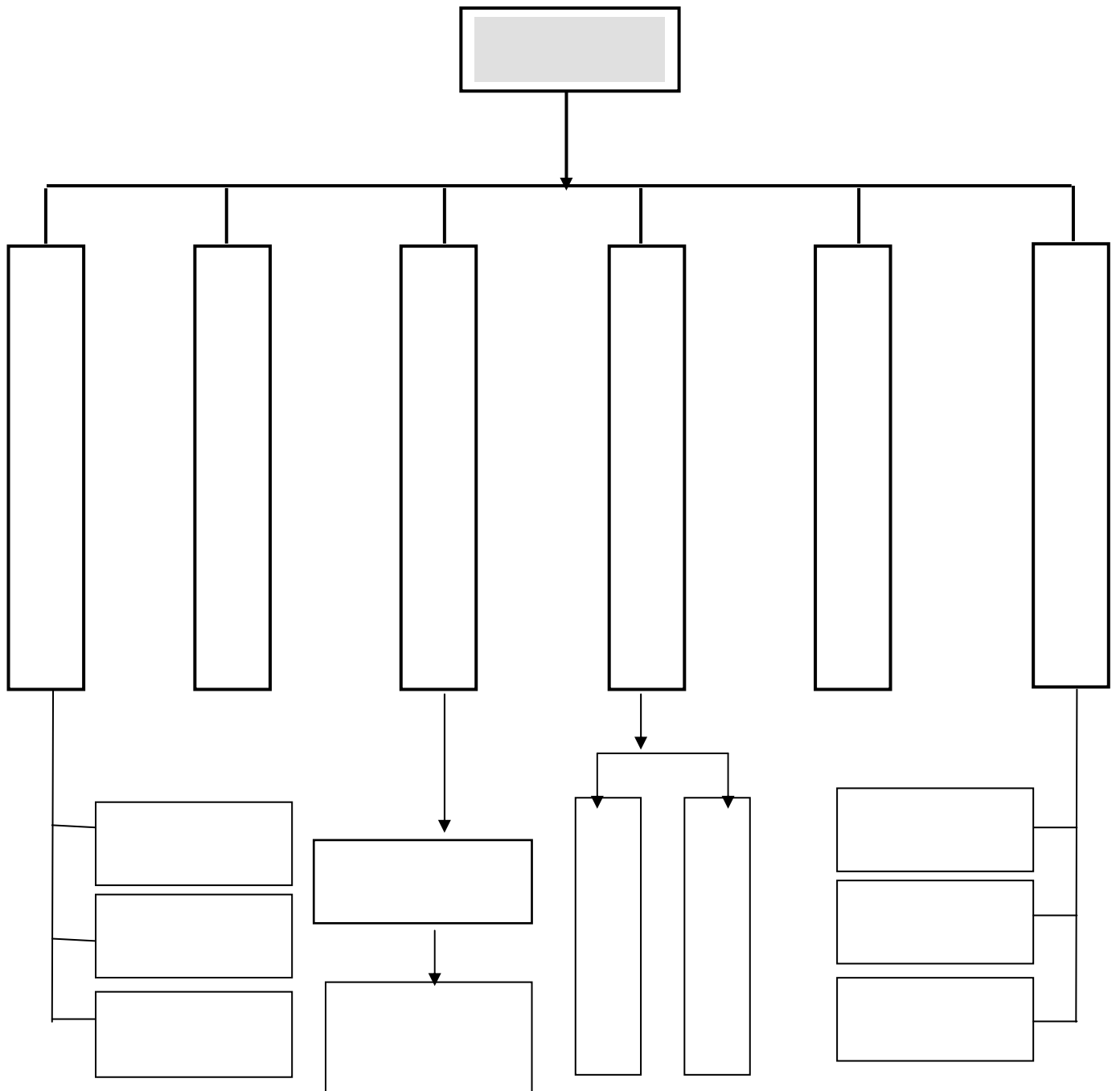
(/ / /)

:

-
-
-
-
-
-

/ /

()



:

(/ / /)

•

.

•

.

•

.

•

.

:

(/ / /)

()

:

•

.

•

.

•

.

•

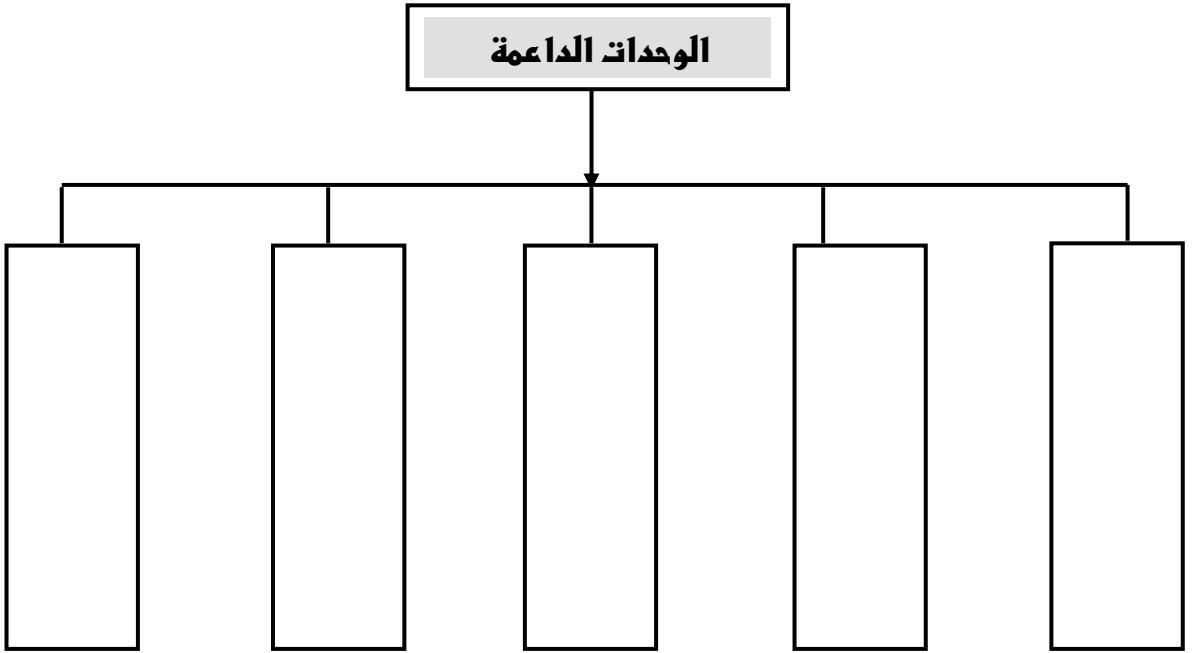
.

•

.

/ /

()



:

(/ /)

:

.

.

.

.

.

-
-
-
-
-

:

(/ /)

:

/ /

.()

:

-
-
-
-
-
-
-
-
-
-

(/ /)

:

()

.

/ /

:

.

.

.

.

.

.

.

•

•

•

•

•

•

•

•

(/ /)

:

:

•

.

.

.

.

.

.

.

.

•

•

•

•

/

/

.

.

/

/

-

/

/

-

: (/)

.

-

-

:

:

:

.

.

.

.

.

.

/

/



Delphi Method

.

Delphi Method

()

(Freund)
(%)

.

: (/)

:

/ /

:

:

.

.

:

.

.

.

.

.

.

.

.

.

.

.

.

.

:

. ()

. ()

. ()

. ()

. ()

. ()

/ /

-

-

-

-

-

-

-

-

-

-

-

-

-

-

-

-

-

-

-

-

-

. () -
. () -

: (/)

:

•

.

•

.

•

.

•

.

•

.

•

.

•

.

•

.

•

.

•

.

•

.

/ /

•

.

•

.

•

.

•

.

()

•

•

.

•

.

•

.

()

•

.

(DSL)

•

.

•

. (ICDL)

•

.

•

.

•

.

/

/

•

.

•

.

•

: (/)

.

•

()

•

.

•

.

•

.

•

.

•

.

•

.

•

.

/ /

"

"

-

.

"

"

-

.

·
·

"

-

"

"

"

-

·
·

.

"

"

-

-

"

"

-

.

"

-

"

.

"

-

"

.

"

"

·
·

"

-

.

-

"

"

-

.

"

"

-

.

"

-

.

"

·
·

/

/

“

”

—

·

—

”

”

·

”

”

—

·
·

·

”

”

—

·

”

—

”

”

”

—

·

”

”

—

—

”

”

—

·

”

”

—

·

”

—

”

· ()

·

”

”

—

·

·

”

—

”

·
·

—

”

—

·
·

”

·

/

/

"

"

-

. ()

()

"

-

"

.

"

-

"

.

"

-

"

www.ituarabic.org

/ /

"

-

"

"

-

:

"

.

"

"

-

.

"

"

-

()

"

"

-

.

"

"

-

.

"

:

"

-

.

"

"

-

.

-

"

"

-

:

:

.

/

/

"

"

-

.

"

"

-

.

"

"

-

.

"

"

-

"

-

"

.

"

"

-

"

-

"

.

"

"

-

.

"

"

-

"

"

-

.

"

"

-

.

.

"

-

.

"

.

.

/

/

I)- Alice Susan Kirkman Kunka, Amodality – instruction interaction study elementary learning disabled using two types electronic learning aids for Math instruction

Thesis (Ph.D.) University of Pittsburgh . (1994), 136p.

2)- A .J. Romisoski, Systems Approach to Design and Development Edition , Elsevier Science ltd . UK . USA JPAN (1966).

3)- Brianl . Dos Santos and Andrew L . Wirght, Internet - supported management education– Information services & Use v.2In2 p53(2001).

4)- C . Burrello Michael L . Tracy and Elsa J .Glassman, A national status report on the use of electronic technology in special education management - Journal of Special Education Fall(1983), vol . I7 issue

5)- Clive Shepert , The evolution of e- learning– IT Training , (Dec 2001 / Jan 2002) p 39 .

6)- Dorothy Leider and Sirkka, The use of information technology to enhance management school education : a theoretical view , MIS Quartely Sep(1995), vol I9 issue 3 . p265.

- 7)- Diane Alonso, The effects of individual differences in spatial visualization ability on dual – task performance (electronic classroom), Thesis (ph. D.) University of Maryland College park (1998)- 240p.
- 8)- Dubois and WILL Phillip, The Virtual learner : Real learner a virtual environment paper presented at virtual learning environment Conference . Denver USA. (1998).
- 9) Eisner . Paul, Maintaining the Technology Edge : the price and the Challenge . Liberal Education . v84 no 3 Summer (1998), p . 44-47 (1998)
- 10)- Instructional management systems high on school shopping – Electronic report (10/10/2003), issue p2.
- 11)- Joe Mullich , Anecond act for Learning– Workface Management Feb(2004), vol . 83 issue 2 p51
- 12)- jonathan Foster , Collaborative E – business planning : developing an enterprise learning tool for information management and information systems curricula, Journal of Electronoic Commerce in Organization – April – Jun(2004) , vol . 2 issue 2. p28.16p.
- 13)- Jennifer Bond Hickman , Analysis of electronic learning logs versus pencil – and – paper journals : constructing understanding inamagnetism (constractivism ninth – grade), Thesis (EDD) Boston University(1999) - 173p .
- 14)- Joanne Susan Bodin , Proximate human contac through the Internet : a technography of an intercultural global electronic learning network , Thesis (PhD) The university of New Mexico (1999)-200p.
- 15)- Kathleen Cahalan, Design of electronic classroom graphical user interface : Nova Southeastern University's multimedia electronic classroom project , Thesis (ph.D .) Nova Southeastern University(2000)-253p.
- 16)- Kenneth C. Werbin , The electronic Learning Community: a framework for design and development , Thesis (M A) Concordia University (1998) – 55 p.
- 17)- Kurtis Wayne Rowley, Toward a computer –integrated education system : a desgn experiment
rocreate an electronic educational system design tool –Thesis (PhD) The Florida State University(1995).

- 18)- Linda Jinda Myers, Influence of group dynamics instruction on small group work and leadership emergence within the electronic classroom , Thesis (Ph. D) Lehigh University (1994)- 288 p
- 19)- Mary Burns , From black and white to color : technology professional development and changing practice , The Journal– vol 29 issue 11. p38 (Jun 2002).
- 20)- Pat Cuckle and S . Clarke , Mentoring student – teachers in schools : views practices and access to ICT , Journal of Computer Assisted learning – vol -18no. 3 Sep(2002) , p330 – 40.
- 21)- Randal A. Lemke & Michelle Thatcher , Software for handhelds Technology & Learning - Apr(2003) vol . 23 issue 9.p38 6p .
- 22)- Randal A. Lemke - Info Comm 2003 : a technology feast for educators – The Journal -May(2003) . vol . 30 issue 1 . p12.3/p.
- 23)- Robby Robson, When should you adopt standard Learning & Training Innovations, Apr, (2003) vol . 4 issue 3 p13.
- 24)-Robert B. Kozma , Technology and classroom practices : an international study, Journal of Technology in Education – vol .36 issue 1Fall(2003), p1. 14p
- 25)-Roger Lewis and Q.Whitlock ,How to plan and manage an E-learning programme, gower,usa,2003.

:
:
-

www. Abegs . org .
www. Moe . gov . sa
www . members . Lycos. Co.uk/s3mt
WWW. ISESCO . ORG. MA
www.watani.org.sa
www.ituarabic.org
www.ituarabic.org
www.ksu.edu.sa/edr
www.mcit.gov.sa
www.as.sch.sa
www.kfs.sch.sa
www.syrianeducation.org
www.elearning.emoe.org
www.moe.gov.jo/leavning
www.menhaj.com
www.dwalej.com
www.alsabaah.com

:
-

WWW.ERIWORLD . COM
www . education – world . com
www . ed. Gov / free
www . edresources . com
www. Educademieicfo . org . net
www . mountveernon . org / education
www . cloud net . com / ~edrbass/edres.htm
www . education Resources

()

/ /

— — —	* . .	.
.	*** .	.
— —	*** .	.
— —	*** . .	.
.	* .	.
— —	. ***	.
—	** . .	.
— —	. . **	.
— — —	. . **	.
— —	*** . .	.
—	. ***	.
— —	*** .	.

— — —	***
.	* .	.
—	*
— —	**
—	*** .	.
—	***
— — —	*** .	.
—	** .	.
— —	*** .	.
— —	. ***	.
. —	*** .	.
— — —	*** .	.
— —	*** .	.
— —	*
— —	*** .	.
—	*** .	.

<div><div></div><div></div></div>	<div>***</div> <div>.</div>	.
<div><div></div><div></div></div>	<div>*</div> <div>.</div>	.
<div><div></div><div></div></div>	<div>*</div> <div>.</div>	.
<div><div></div><div></div></div>	<div>*</div> <div>.</div>	.
<div><div></div><div></div></div>	<div>***</div> <div>.</div>	.
<div><div></div><div></div></div>	<div>*</div> <div>.</div>	.
<div><div></div><div></div></div>	<div>.</div> <div>***</div>	.
<div><div></div><div></div></div>	<div>*</div> <div>.</div> <div>.</div>	.
<div><div></div><div></div></div>	<div>*</div> <div>.</div>	.
<div><div></div><div></div></div>	<div>*</div> <div>.</div>	.
<div><div></div><div></div></div>	<div>***</div> <div>.</div>	.
<div><div></div><div></div></div>	<div>***</div> <div>.</div>	.
<div><div></div><div></div></div>	<div>***</div> <div>.</div>	.
<div><div></div><div></div></div>	<div>***</div> <div>.</div>	.
<div><div></div><div></div></div>	<div>**</div> <div>.</div>	.
<div><div></div><div></div></div>	<div>***</div> <div>.</div>	.

—	***	.	.
— —	*	.	.
—	*	.	.
—	*	.	.
—	*	.	.
—	*	.	.
—	*	.	.
—	*	.	.
—	*	.	.
— — —	*	.	.
—	***	.	.
— —	***	.	.
— — ()	*	.	.
— —	*	.	.
— —		.	.
— —	*	.	.
— —	*	.	.
— —	***	.	.
—	***	.	.
— — —	**	.	.
— —	***	.	.

— —	***	.	.
- —	**	.	.
—	**	.	.
—	*	.	.
— —	**	.	.
—	**	.	.
—	**	.	.
	**	.	.
.	*	.	.
.	*	.	.
— —	***	.	.
—	***	.	.
— —	**	.	.
— —	***	.	.
— —	*	.	.
— —	***	.	.

()

/ /

بسم الله الرحمن الرحيم

/

:

)

(

-

(-)

.

(Delphi)

.

(Delphi)

()

.

.

/

-

Email : S _ MOZHER @ Yahoo . Co
Mo : 0554499910

/

/

(✓)

:

:

-

:

-

.....

:

-

-

:

-

(

)

:()

-

-

:

:

.....

/

/

⋮

⋮

/ /

⋮

⋮

/ /

:

:

/

/

⋮

⋮

⋮

/

/

•

:

/

/

()

/ /

بسم الله الرحمن الرحيم

/

:

)

(

-

(-)

.

(Delphi)

()

.

(Delphi)

.

.

/

-

Email : S _ MOZHER @ Yahoo . Com
Mo : 0554499910

/

/

(✓)

:

:



-

:

-

.....



:

-



-



:

-

(

)



:()

-



-



:

:

.....

/

/

:

:

/

/

:

--
--
--
--

/ /

$$\frac{\vdots}{\vdots \quad \vdots}$$

$$\vdots \quad \vdots \quad ($$

:

.....-

.....-

.....-

.....-

/ /

: (

						.	
						.	
						.	
						.	
						.	
						.	
						.	

/ /

						.	
						.	
						.	
						.	
						.	

:
 :

:

/
 /

						()	

:

..... -
..... -
..... -
..... -

/ /

:

:

:

/

/

						.	
						.	
						.	
						.	
						.	
						.	
						.	
						.	
						.	
						.	

:

.....-

.....-

.....-

/ /

: :

.

: (

/ /

						.	
						.	
						.	
						.	
						.	
						.	

						.	
						.	
						.	
						.	
						.	
						.	
						.	
						.	

: (

: (

/ /

: (

:

.....-
.....-
.....-

/ /

⋮ ⋮

⋅

/ /

:

.....-

.....-

/ /

:

:

.

/

/

:

..... -

..... -

..... -

..... -

/ /

⋮

⋮

:

.....-

.....-

.....-

.....-

/ /

()

/ /

**إدارة التعليم الإلكتروني في
التعليم العام بالمملكة العربية السعودية
هيكل تنظيمي مقترح**

()

/

/ .

/ /

/ /

:

)

(

(-)

.

(Delphi)

()

.

(Delphi)

.

.

/

-

Email : S _ MOZHER @ Yahoo . Com
Mo : 0554499910

/ /

• —

10

• —

.....

• —

10

• **1997** – **1998** – **1999** – **2000** – **2001** – **2002** – **2003** – **2004** – **2005** – **2006** – **2007** – **2008** – **2009** – **2010** – **2011** – **2012** – **2013** – **2014** – **2015** – **2016** – **2017** – **2018** – **2019** – **2020** – **2021** – **2022** – **2023** – **2024** – **2025** – **2026** – **2027** – **2028** – **2029** – **2030** – **2031** – **2032** – **2033** – **2034** – **2035** – **2036** – **2037** – **2038** – **2039** – **2040** – **2041** – **2042** – **2043** – **2044** – **2045** – **2046** – **2047** – **2048** – **2049** – **2050** – **2051** – **2052** – **2053** – **2054** – **2055** – **2056** – **2057** – **2058** – **2059** – **2060** – **2061** – **2062** – **2063** – **2064** – **2065** – **2066** – **2067** – **2068** – **2069** – **2070** – **2071** – **2072** – **2073** – **2074** – **2075** – **2076** – **2077** – **2078** – **2079** – **2080** – **2081** – **2082** – **2083** – **2084** – **2085** – **2086** – **2087** – **2088** – **2089** – **2090** – **2091** – **2092** – **2093** – **2094** – **2095** – **2096** – **2097** – **2098** – **2099** – **2100** – **2101** – **2102** – **2103** – **2104** – **2105** – **2106** – **2107** – **2108** – **2109** – **2110** – **2111** – **2112** – **2113** – **2114** – **2115** – **2116** – **2117** – **2118** – **2119** – **2120** – **2121** – **2122** – **2123** – **2124** – **2125** – **2126** – **2127** – **2128** – **2129** – **2130** – **2131** – **2132** – **2133** – **2134** – **2135** – **2136** – **2137** – **2138** – **2139** – **2140** – **2141** – **2142** – **2143** – **2144** – **2145** – **2146** – **2147** – **2148** – **2149** – **2150** – **2151** – **2152** – **2153** – **2154** – **2155** – **2156** – **2157** – **2158** – **2159** – **2160** – **2161** – **2162** – **2163** – **2164** – **2165** – **2166** – **2167** – **2168** – **2169** – **2170** – **2171** – **2172** – **2173** – **2174** – **2175** – **2176** – **2177** – **2178** – **2179** – **2180** – **2181** – **2182** – **2183** – **2184** – **2185** – **2186** – **2187** – **2188** – **2189** – **2190** – **2191** – **2192** – **2193** – **2194** – **2195** – **2196** – **2197** – **2198** – **2199** – **2200** – **2201** – **2202** – **2203** – **2204** – **2205** – **2206** – **2207** – **2208** – **2209** – **2210** – **2211** – **2212** – **2213** – **2214** – **2215** – **2216** – **2217** – **2218** – **2219** – **2220** – **2221** – **2222** – **2223** – **2224** – **2225** – **2226** – **2227** – **2228** – **2229** – **2230** – **2231** – **2232** – **2233** – **2234** – **2235** – **2236** – **2237** – **2238** – **2239** – **2240** – **2241** – **2242** – **2243** – **2244** – **2245** – **2246** – **2247** – **2248** – **2249** – **2250** – **2251** – **2252** – **2253** – **2254** – **2255** – **2256** – **2257** – **2258** – **2259** – **2260** – **2261** – **2262** – **2263** – **2264** – **2265** – **2266** – **2267** – **2268** – **2269** – **2270** – **2271** – **2272** – **2273** – **2274** – **2275** – **2276** – **2277** – **2278** – **2279** – **2280** – **2281** – **2282** – **2283** – **2284** – **2285** – **2286** – **2287** – **2288** – **2289** – **2290** – **2291** – **2292** – **2293** – **2294** – **2295** – **2296** – **2297** – **2298** – **2299** – **2300** – **2301** – **2302** – **2303** – **2304** – **2305** – **2306** – **2307** – **2308** – **2309** – **2310** – **2311** – **2312** – **2313** – **2314** – **2315** – **2316** – **2317** – **2318** – **2319** – **2320** – **2321** – **2322** – **2323** – **2324** – **2325** – **2326** – **2327** – **2328** – **2329** – **2330** – **2331** – **2332** – **2333** – **2334** – **2335** – **2336** – **2337** – **2338** – **2339** – **2340** – **2341** – **2342** – **2343** – **2344** – **2345** – **2346** – **2347** – **2348** – **2349** – **2350** – **2351** – **2352** – **2353** – **2354** – **2355** – **2356** – **2357** – **2358** – **2359** – **2360** – **2361** – **2362** – **2363** – **2364** – **2365** – **2366** – **2367** – **2368** – <

10

• • • • •

11

10

10

.....

10

—

11

:

.Freund

%

·%

•

•

•

•

•

/

/

الجزء الثاني : واقع إدارة التعليم الإلكتروني في التعليم العام في المملكة العربية السعودية :

[illegible]

:
:
:

:

(:

م	العبارة	موافق تماماً (٥)	موافق (٤)	محايد (٣)	غير موافق (٢)	غير موافق تماماً (١)

(:

م	العبارة	موافق تماماً (٥)	موافق (٤)	محايد (٣)	غير موافق (٢)	غير موافق تماماً (١)

/ /

:
 :

:

م	العبارة	موافق تماماً (٥)	موافق (٤)	محايد (٣)	غير موافق (٢)	غير موافق تماماً (١)

/
 /

: :

(:

م	العبارة	موافق تماماً (٥)	موافق (٤)	محايد (٣)	غير موافق (٢)	غير موافق تماماً (١)

(:

/ /

(:

(:

م	العبارة	موافق تماماً (٥)	موافق (٤)	محايد (٣)	غير موافق (٢)	غير موافق (تماماً ١)

(:)

م	العبارة	موافق تماماً (٥)	موافق (٤)	محايد (٣)	غير موافق (٢)	غير موافق تماماً (١)

: :

م	العبارة	موافق تماماً (٥)	موافق (٤)	محايد (٣)	غير موافق (٢)	غير موافق تماماً (١)

:

:

م	العبارة	موافق تماماً ^٥ (٥)	موافق (٤)	محايد (٣)	غير موافق (٢)	غير موافق تماماً (١)

/

/

:
:

م	العبارة	موافق تماماً ^٥ (٥)	موافق (٤)	محايد (٣)	غير موافق (٢)	غير موافق تماماً (١)